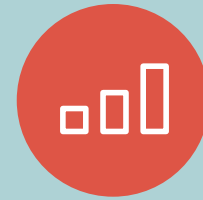


Budget at a glance

The government has delivered a budget surplus in 2015-16 and is forecasting further surpluses in the future.

This is the 8th budget surplus the government has delivered since coming to office.

This clearly demonstrates the government's ability to responsibly manage the State's finances while delivering essential services and world class infrastructure projects.



\$948
MILLION

To grow and support local jobs



Total infrastructure spend

\$12.1 BILLION

Government funded infrastructure projects

Investment over 4 years

\$3.2 BILLION Health facilities (Including NRAH).

\$2 BILLION Road projects.

\$783 MILLION Public transport.

\$442 MILLION Education facilities in addition to \$250 million low interest loan facility for private schools.

\$222 MILLION Adelaide Festival Centre Precinct and Her Majesty's Theatre.

\$588 MILLION Residential housing including 1000 houses in 1000 days.

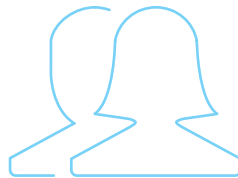


South Australia: the best place to do business

\$740 MILLION

In total tax relief announced in the last 2 years to support South Australian businesses

South Australia is now the lowest taxing state for commercial property transfers.



Building on business incentives to create local jobs

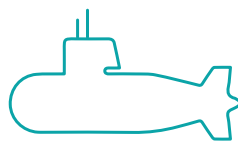
Job creation grants

\$109 MILLION To businesses who employ more workers.

Extend the small business payroll tax rebate for four years

\$40 MILLION For small businesses, reducing their payroll tax.

Extend and expand the off the plan stamp duty concession



Defence opportunities

\$19 MILLION

To leverage opportunities to build our defence sector

\$6 MILLION To secure new defence investment and jobs in South Australia.

\$5 MILLION For the extension of the wharf at the Techport Common User Facility.



Investing in Science Technology Engineering Mathematics

\$500 MILLION

To upgrade school facilities and prepare our children for the jobs of the future

\$250 MILLION Refurbish and redevelop contemporary science, technology, engineering and mathematics facilities in 139 public schools.

\$250 MILLION For the first time, private schools will have access to a loan facility at government borrowing rates to fund infrastructure that improves school learning facilities.



Taking action on the environment

MORE THAN \$98 MILLION

To protect, sustain and enhance our clean and green environment

SOLID WASTE LEVY - The levy will increase from \$62 per tonne at 1 July 2016 to \$103 by 2019-20.

\$26.4 MILLION For a range of local government waste and resource recovery grants.

\$34.3 MILLION Delivering phase two of the Riverine Recovery project.

\$11.9 MILLION Partner with the Adelaide City Council to leverage private sector investment in renewable energy and storage, building energy efficiency and electric vehicles infrastructure.

We are replacing around **30% OF THE STATE GOVERNMENT FLEET VEHICLES** with low or zero emission vehicles within three years.



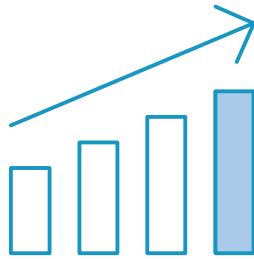
Adelaide, the vibrant city

MORE THAN \$65 MILLION

For art infrastructure and cultural programs

\$3.1 MILLION Additional support for the OzAsia Festival.

\$15 MILLION To support the South Australian arts sector.



Building a globally connected and competitive economy

\$135 MILLION

To grow investment in future industries

Commitment to spend at least **\$20 MILLION** on innovation initiatives each year.

\$50 MILLION SA Venture Capital Fund - Fund to partner with private sector financiers to support innovation and help build high-growth companies.

\$35 MILLION Additional funding to encourage visitors to South Australia and attract major events.

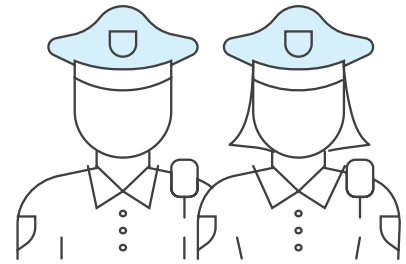
\$20 MILLION To continue to attract businesses to the state.



On new initiatives in regional areas

\$384 MILLION

\$106.5 MILLION To refurbish and redevelop contemporary science, technology, engineering and mathematics facilities in regional schools.



Protecting the community

\$169 MILLION

Extra resources for police, the justice sector and emergency services.



Investing in our community

\$336 MILLION

\$144 MILLION To support wellbeing in our community.

\$90.7 MILLION In additional disability funding to support the transition to NDIS and provide additional disability services support.

\$1.5 MILLION Additional funding to support and rehabilitate people affected by problem gambling. Funded from the introduction of a wagering tax.

\$8.5 MILLION To assist the community recover from the Pinery bushfire of November 2015.



To support our health system

\$527 MILLION