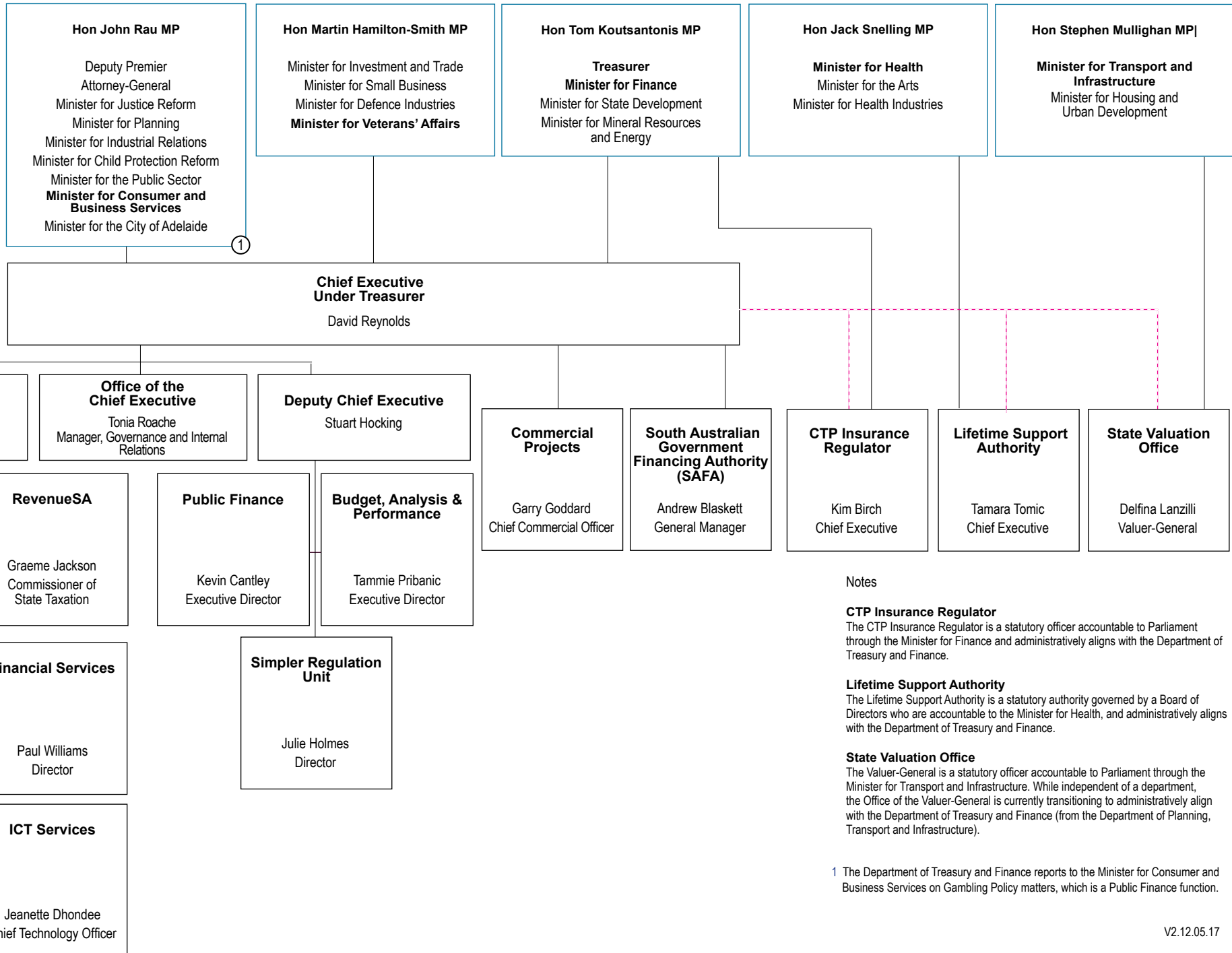


# Organisational Chart



**Government of South Australia**  
Department of Treasury and Finance



**Notes**

**CTP Insurance Regulator**

The CTP Insurance Regulator is a statutory officer accountable to Parliament through the Minister for Finance and administratively aligns with the Department of Treasury and Finance.

**Lifetime Support Authority**

The Lifetime Support Authority is a statutory authority governed by a Board of Directors who are accountable to the Minister for Health, and administratively aligns with the Department of Treasury and Finance.

**State Valuation Office**

The Valuer-General is a statutory officer accountable to Parliament through the Minister for Transport and Infrastructure. While independent of a department, the Office of the Valuer-General is currently transitioning to administratively align with the Department of Treasury and Finance (from the Department of Planning, Transport and Infrastructure).

<sup>1</sup> The Department of Treasury and Finance reports to the Minister for Consumer and Business Services on Gambling Policy matters, which is a Public Finance function.