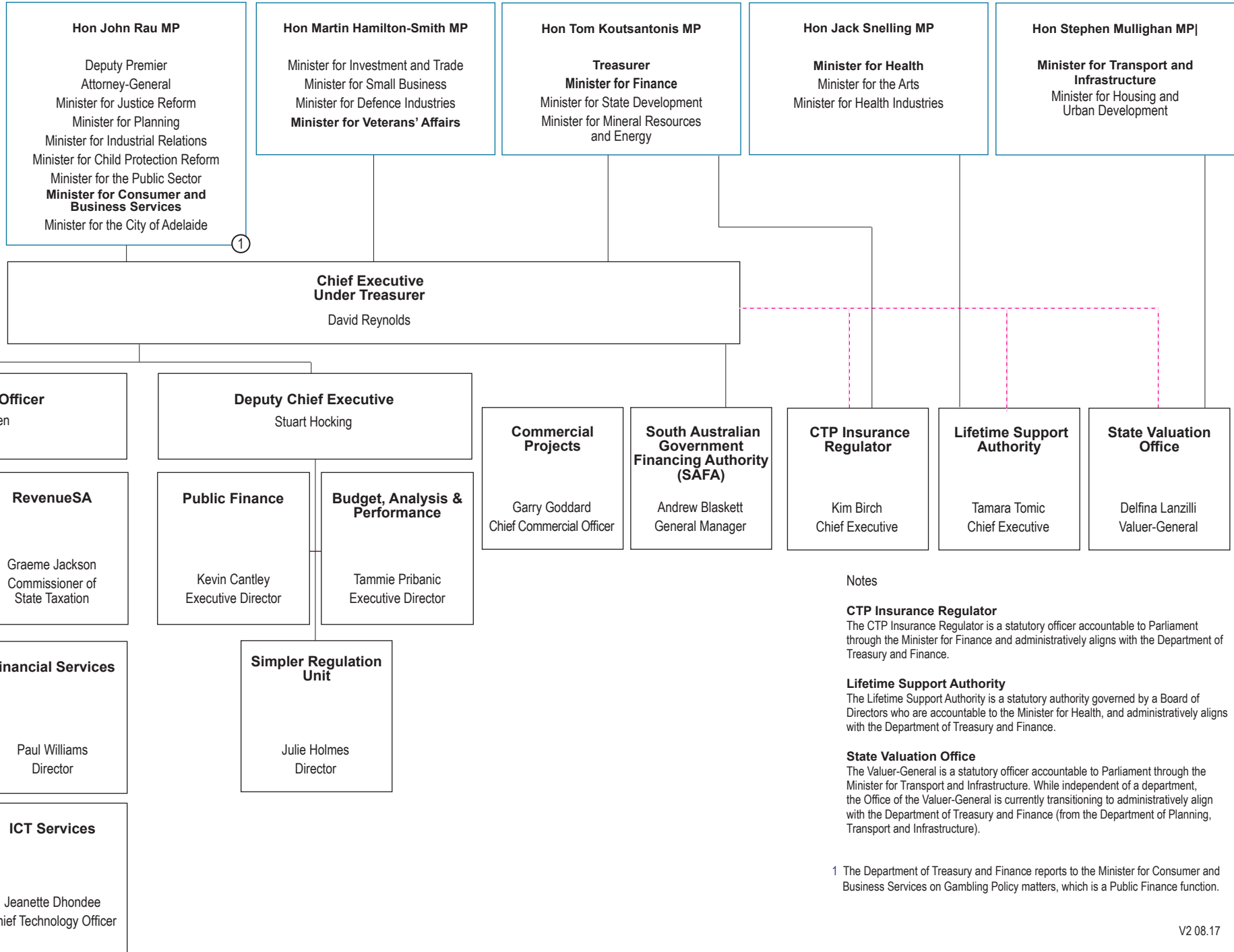


Organisational Chart



Government of South Australia
Department of Treasury and Finance



Notes

CTP Insurance Regulator

The CTP Insurance Regulator is a statutory officer accountable to Parliament through the Minister for Finance and administratively aligns with the Department of Treasury and Finance.

Lifetime Support Authority

The Lifetime Support Authority is a statutory authority governed by a Board of Directors who are accountable to the Minister for Health, and administratively aligns with the Department of Treasury and Finance.

State Valuation Office

The Valuer-General is a statutory officer accountable to Parliament through the Minister for Transport and Infrastructure. While independent of a department, the Office of the Valuer-General is currently transitioning to administratively align with the Department of Treasury and Finance (from the Department of Planning, Transport and Infrastructure).

¹ The Department of Treasury and Finance reports to the Minister for Consumer and Business Services on Gambling Policy matters, which is a Public Finance function.